

# ROMANO COLLECTION

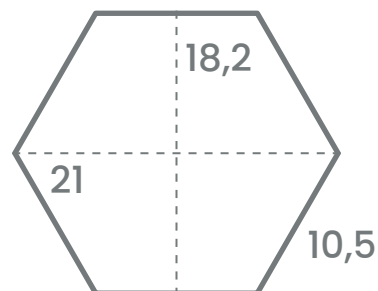
TECHNICAL DATA SHEET

FANGOROSA

# SHAPES

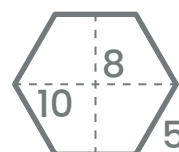
## ESAGONO 10,5

Thickness: 1 cm



## ESAGONO 5

Thickness: 1 cm



# COLORS

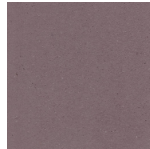
## SOLID COLORS



FLAMINGO



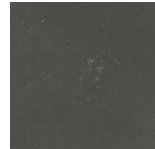
POLVERE



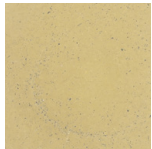
PRUGNA



CIELO



ARDESIA



OCRA



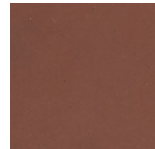
LIMONE



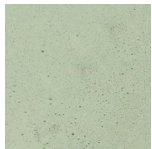
MIELE



ARANCIO



OSSIDO

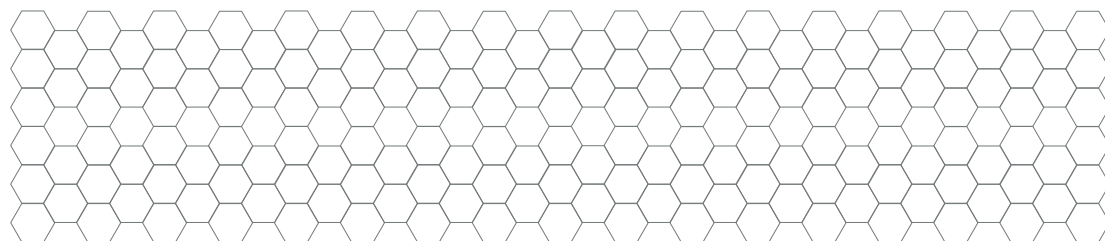
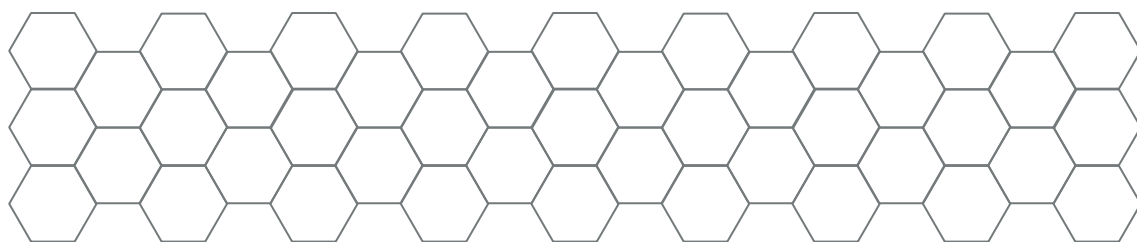


VERDE

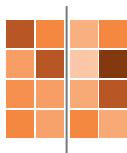


ABETE

# LAYING PATTERNS

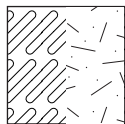


# TECHNICAL AREA



## COLOR VARIATION

V3 - Moderate variation  
V4 - Heavy variation



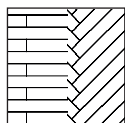
## TEXTURE VARIATION

T3 - Medium texture  
T4 - Heavy texture



## FROST RESISTENCE

This product is suitable for outdoor installation even with cold temperatures below 0°C.



## INTENDED USE

Internal floors and wall coverings, external wall coverings.

## PRODUCT FEATURES

Our Roman concrete is made from a mixture of water, white or gray cement, hard mineral powders, and natural pigments. This mixture is worked in a liquid state, poured into special molds, and then vibrated. The cement tiles are smoothed and polished manually in multiple steps and treated with oil-repellent products to reduce the absorption of oil and the formation of stains. As a stone material, its consistency and protection improve with proper use and over time.

Any color variations, porosity, fine cracks, and grain patterns of different colors are characteristics of the material and the craftsmanship and are therefore not considered defects. As this is a handcrafted piece, the thickness may vary by 2-3 mm depending on the shape requested.

As a completely handcrafted product, our Roman concrete is not subject to European regulations.

## GENERAL WARNINGS

Avoid storing the material outdoors, as rainwater, if it were to penetrate the packaging, could damage the product. Install the material promptly to prevent efflorescence and/or color variations from forming on the tile surface.

## SUBSTRATE

The substrate must be solid, level, and free of oil, grease, roughness, encrustations, and dust. If there are cracks in the screed, it is recommended to seal them with suitable products. Allow the screed adequate drying time.

# TECHNICAL AREA

## LAYOUT AND INSTALLATION

Dry-lay the tiles to check the shape and flatness of the product. Apply the adhesive evenly to the leveling compound using a wide-toothed trowel. Apply the adhesive to the back of the tiles as well. Cement-based adhesives are recommended. We recommend selecting tiles from multiple boxes to better distribute the color gradients and avoid inadvertently creating color stains. We also recommend dry-laying the tiles to ensure they are square and flat.

Any adhesive residue on the surface of the tile or in the joints must be removed.

Grout only after waiting the recommended times for the adhesives to dry out and, in any case, no earlier than 7-8 days after installing the cement tiles, making sure to leave a 2 mm gap for the joints. Install the tiles using specific high-performance deformable adhesives (such as Mapei Keraflex Maxi S1 or Kerakoll H40 flex), taking care to follow the instructions on the packaging. Any adhesive residue on the surface or in the joints must be removed.

Calcestruzzo Romano tiles are not resistant to acids, and even diluted acids tend to attack them. Do not use acids for initial cleaning after installation. Do not use wax removers or alkaline products, which can damage the polish. We recommend using single-brush brushes, without abrasive discs, with a white or beige disc. Dry the floor evenly and thoroughly, vacuuming up any residual liquid. This can also be done manually with a brush and rags. Rinse thoroughly with clean water and let dry.

**Grouting and installation should be performed by qualified personnel.**

## TREATMENT

We recommend using the **CEMENT AND CONCRETE TREATMENT KIT FOR INTERIORS** for indoor installations.

We recommend using the **CEMENT AND CONCRETE TREATMENT KIT FOR EXTERIORS** for installations in showers, and outdoors.

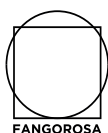
All operations must be performed exclusively by qualified installers. Always test treatment products on a loose tile to verify their absorbency.

After gluing, it is recommended to thoroughly wash the surfaces evenly with **FANGOROSA CLEANER**. Once the floor is completely dry, with no damp marks, apply two coats of **FANGOROSA TREATMENT** water-repellent, avoiding excess residue, and then let dry. Then apply two coats of **FANGOROSA FINISH** wax and let it dry.

Then apply the cement grout.

After cleaning the floor of any remaining grout with **FANGOROSA CLEANER**, apply a further even coat of **FANGOROSA TREATMENT** water-repellent, leaving no residue. Then let dry.

Once the treatment is complete, finish with a coat of **FANGOROSA FINISH** wax.



**ROMANO  
COLLECTION**

# TECHNICAL AREA

## PRODUCT CHARACTERISTICS

### AGGREGATES



Our concrete products are manufactured by hand using a traditional mix of aggregates, sand and cement. Sometimes, the aggregates may be visible within the surface enhancing the natural and unique texture of the material.

### BUG HOLES



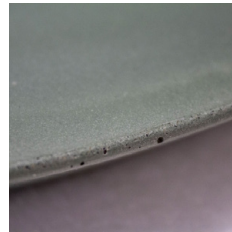
During the casting process some air could be trapped within the concrete and it can sometimes cause small holes within the surface. These holes can vary in size and they add to the texture a distinctive aesthetic.

### SURFACE COLOR VARIATIONS



The different materials mixed together to create concrete can cause colour variations on the surface. These peculiar variations in tone and texture make the material naturally unique.

### EDGE PATINATION



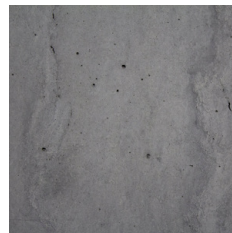
Some cement products require the use of two-part molds. The junction between the two molds may result in a different texture around the edges. This method creates a rougher and more distinctive surface pattern.

### BLEEDING



Since concrete is cast in its liquid state, sometimes some textural flow lines can be visible on the surfaces. This feature tends to be more visible when casting curved or tall vertical surfaces and is another typical characteristic of concrete.

### CRAZING



Small, fine cracks on the surface of the concrete products are very common and they do not impact their structural quality or performance. Each piece is subjected to an accurate quality check to insure durability and stability.

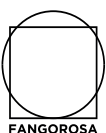
# TECHNICAL AREA

## REGULAR MAINTENANCE

We recommend using **FANGOROSA SOAP** - a universal cleaner for the daily cleaning of all surfaces. Alternatively, you can use neutral soap and water. Do not use alcohol, acid-based detergents, solvents, or ammonia. Do not use harsh, acidic, or alkaline detergents.

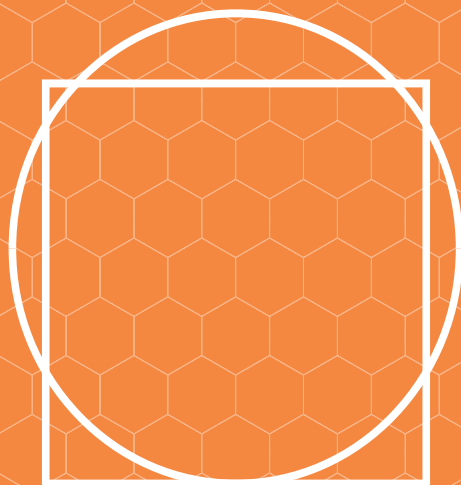
The wax finish should be renewed periodically, every 8-10 months. When necessary, we recommend applying a coat of **FANGOROSA FINISH** (interior or exterior, depending on the intended use).

All products are available at [www.fangorosa.com](http://www.fangorosa.com).



**ROMANO  
COLLECTION**





**FANGOROSA**