

SICANO/ ZAGARA COLLECTION

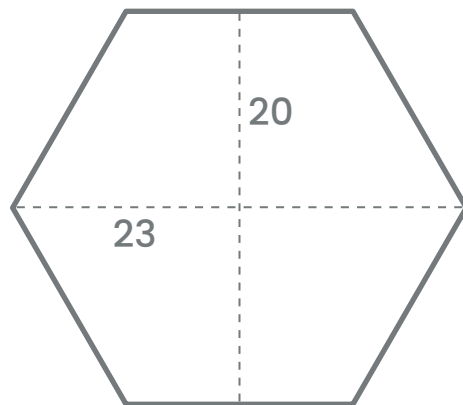
TECHNICAL DATA SHEET

FANGOROSA

SHAPES

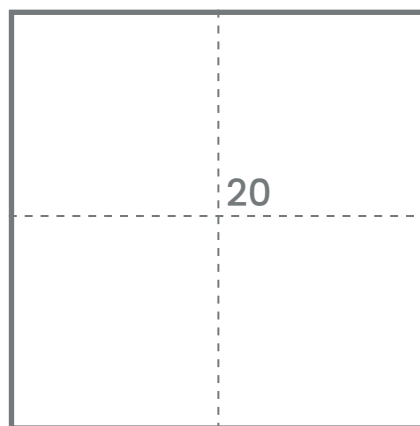
ESAGONO 11,5

Thickness: 2 cm



QUADRATO

Thickness: 2 cm



COLORS

SICANO



ALLUMINIO



ARGENTO



CEMENTO



LUCE



TITANIO



CREMA



CENERE



ECRÙ



TERRA



OTTONE



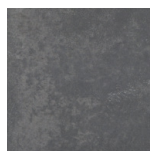
CARTA DA
ZUCCHERO



FOGLIA



MUSCHIO



CARBONE



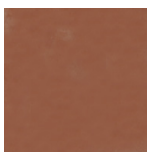
FERRO



RAME



UVA



GRANATA



AZZURRO



DENIM

COLORS

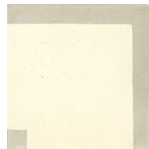
ZAGARA



**ALLUMINIO
AND DENIM**



**ARGENTO
AND RAME**



**CREMA AND
CEMENTO**



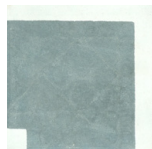
**CARBONE
AND DENIM**



**CEMENTO
AND ARGENTO**



**CENERE AND
ECRÙ**



**DENIM AND
ZUCCHERO**



**ECRÙ AND
OTTONE**



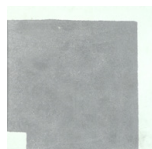
**FOGLIA AND
CREMA**



**FOGLIA AND
MUSCHIO**



**GRANATA
AND UVA**



**GRAY AND
ZUCCHERO**



**LUCE AND
TITANIO**



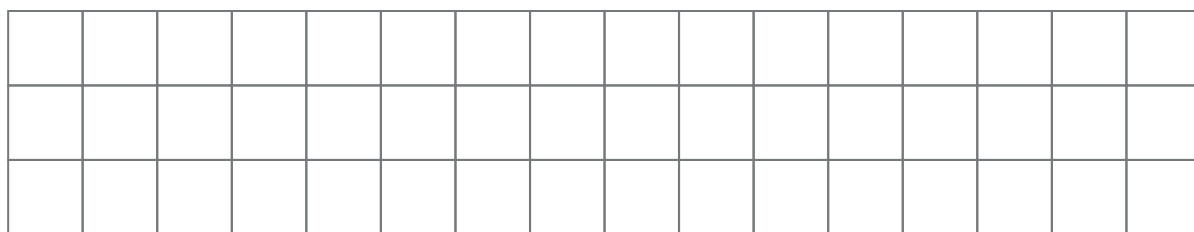
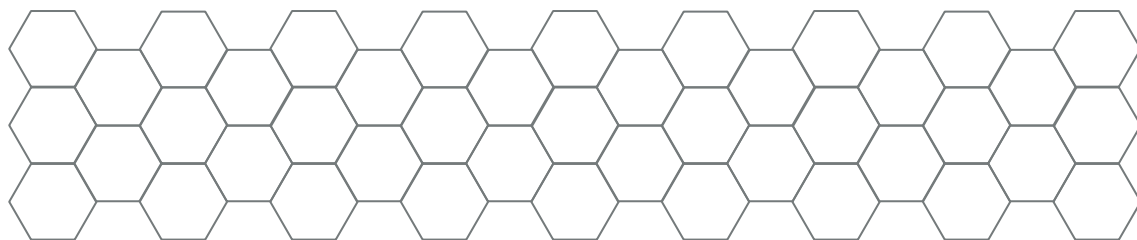
**OTTONE AND
ECRÙ**



**TERRA AND
ECRÙ**

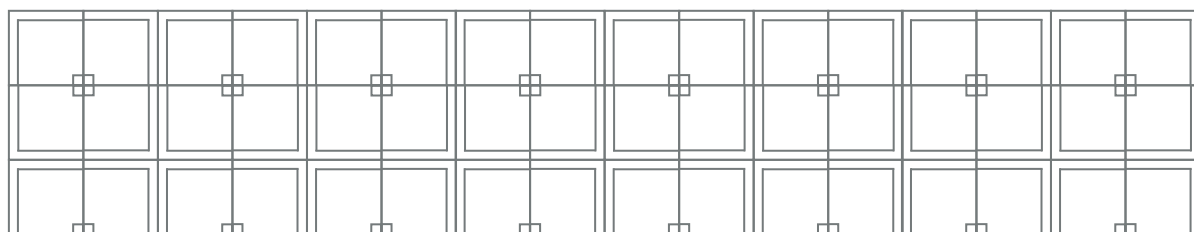
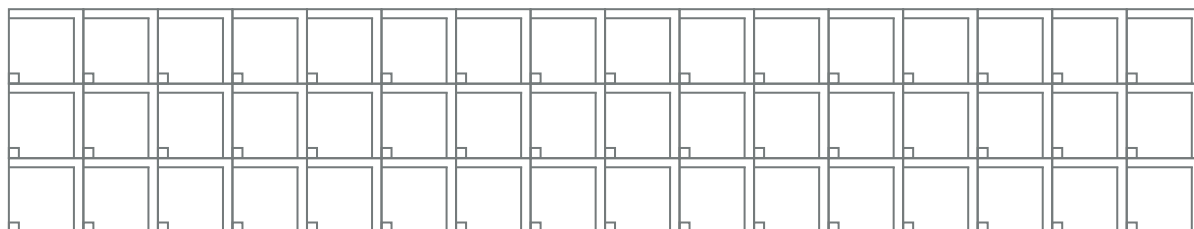
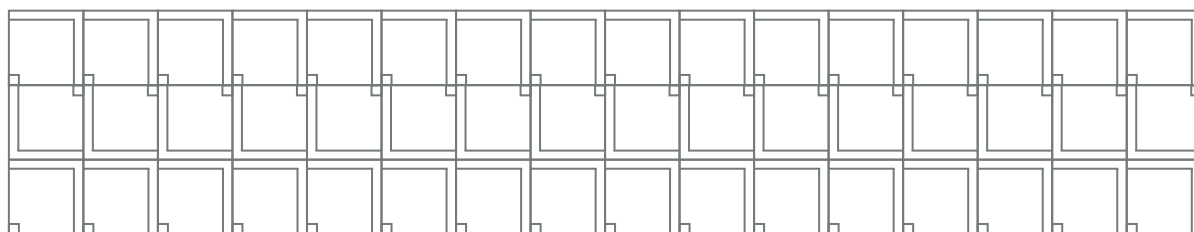
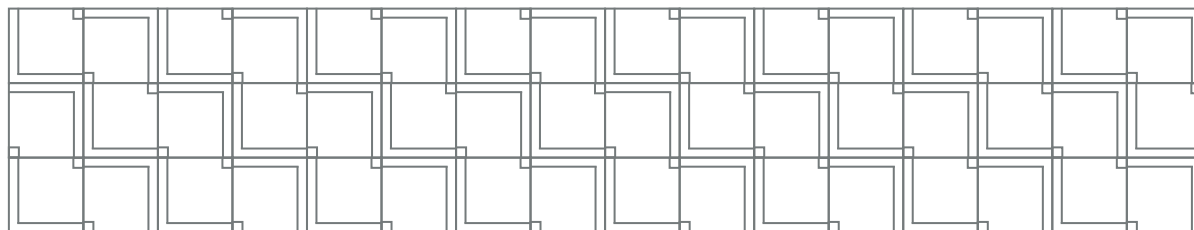
LAYING PATTERNS

SICANO



LAYING PATTERNS

ZAGARA

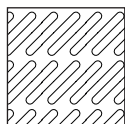


TECHNICAL AREA



COLOR VARIATION

V3 - Moderate variation



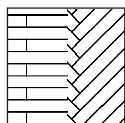
TEXTURE VARIATION

T3 - Medium texture



NO FROST RESISTANCE

This product is not suitable for outdoor installation with cold temperatures below 0°C



INTENDED USE

Internal floors and wall coverings, external wall coverings only if covered.

PRODUCT FEATURES

The variation of dimension and colour, the micro holes on the surface are within the tolerance of a handmade manufacturing process and, for this reason, to be considered distinctive features of the product itself.

GENERAL WARNINGS

Avoid stocking material open-air to prevent rain water soaking the packaging and damaging the materials. Install the tiles as soon as possible and do not leave the product at prolonged exposure to sunlight to prevent efflorescence or tone fading on the tile surface.

DIRECTION FOR USE

The Sicano and Zagara collections are intended for internal and covered external use only, because the prolonged exposure to UV rays can change over time the colour tone of the tiles. The product should not be sanded.

SUBSTRATE

The substrate must be compact, flat, free of oil, grease, roughness, dust and debris. In case of cracks in the screed, it is highly recommended to fix them with suitable products. Allow the cement substrate to dry properly. Carefully remove any possible remaining damp off the installation areas and avoid laying the tiles on wet surfaces.

TECHNICAL AREA

LAYOUT AND INSTALLATION

We recommend selecting tiles from multiple boxes to better distribute the color gradients and avoid inadvertently creating color stains. We also recommend dry-laying the tiles to ensure they are square and flat. Apply the adhesive evenly to the leveling compound using a widetoothed trowel. Apply the adhesive to the back of the tiles as well. Cement-based adhesives are recommended.

Any adhesive residue on the surface of the tile or in the joints must be removed.

A 1 mm joint is recommended. Grouting should be performed by qualified personnel.

TREATMENT

We recommend using the **CEMENT AND CONCRETE TREATMENT KIT FOR INTERIORS** for indoor installations.

We recommend using the **CEMENT AND CONCRETE TREATMENT KIT FOR EXTERIORS** for installations inside shower walls, bathroom areas and covered exteriors.

All operations must be performed exclusively by qualified installers. Always test treatment products on a loose tile to verify their level of absorption.

We recommend washing the surfaces thoroughly and evenly with **FANGOROSA CLEANER** detergent.

We recommend using single-brushes, not abrasive discs.

Dry the floor evenly and compactly, vacuuming up any liquid residue.

Rinse thoroughly with clean water and let dry.

Once the floor is completely dry, with no damp marks, apply two coats of **FANGOROSA TREATMENT** water-repellent, avoiding excess residue, and then let dry. Then apply two coats of **FANGOROSA FINISH** wax and let it dry.

Then apply the cement grout.

After removing any grout residue from the floor with **FANGOROSA CLEANER**, apply a further even coat of **FANGOROSA TREATMENT** water-repellent, leaving no residue. Then let dry.

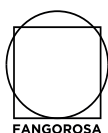
Once the treatment is complete, finish with a coat of **FANGOROSA FINISH** wax.

REGULAR MAINTENANCE

We recommend using **FANGOROSA SOAP** - a universal cleaner for the daily cleaning of all surfaces. Alternatively, you can use neutral soap and water. Do not use alcohol, acid-based detergents, solvents, or ammonia. Do not use harsh, acidic, or alkaline detergents.

The wax finish should be renewed periodically, every 8-10 months. When necessary, we recommend applying a coat of **FANGOROSA FINISH** (interior or exterior, depending on the intended use).

All products are available at www.fangorosa.com.

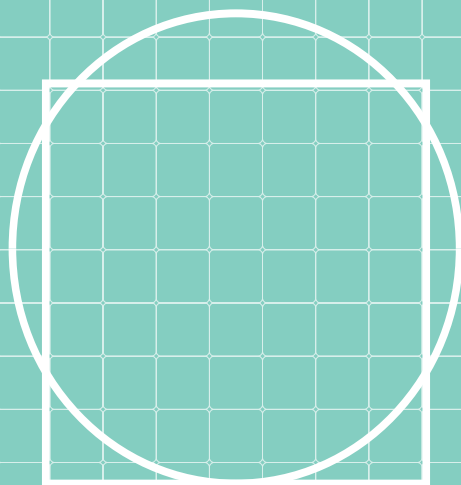


**SICANO/ZAGARA
COLLECTION**

TECHNICAL AREA

TECHNICAL FEATURES

Lenght and width	~ 0,2 %
Thickness	~ 0,2 %
Straightness of sides	~ 0,2 %
Identification	CMI Cement, sand and marble
Characteristics	High chemical and physical resistance to environmental polluting agents - High resistance to UV rays
Physical properties	Washable - Installation temperature from +5° C to +45° C
Resistance to dynamic loads	Covers a wide range of vibration stresses, given the homogeneity of the material
Rbk	500 kg/cmq
Breaking load	600 kg/cmq
Wear resistance	85 kg/cmq
Toxicological information	None
Water absorption (treated tile)	0,1 %



FANGOROSA